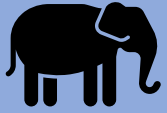


African Safari Adventure



Three Different Safari Camps in Zambia



9 Morning Safaris, 8 by jeep & boat, 1 by boat and on foot



7 Evening Safaris by jeep, dining under the stars



Victoria Falls, Zimbabwe, 5-star hotel



Guided walking tour, helicopter tour, evening train excursion



Cape Town South Africa, 4-star hotel, city tour, mountain cable car





Ostrich Farm, village shopping, Tabletop Mountain



Horseback mountain ride, Quad bike ride, vineyard tour & tasting

African Safari Adventure-Details

- 16 Days, all lodging, most meals, daily laundry service for 9 days in the field, most portage fees
- Roundtrip airfare included, plus 7 in-country flights
- All taxes, visitor fees, transfers, entrance fees
- \$8,450 per person (\$528 per day)
- All photos are of animals in the wild, no stock shots, no fences, no closed vehicles



“I HAVEN’T BEEN
EVERYWHERE, BUT
IT’S ON MY LIST.”

SUSAN SONTAG







Royal Airfield



Zambezi River





















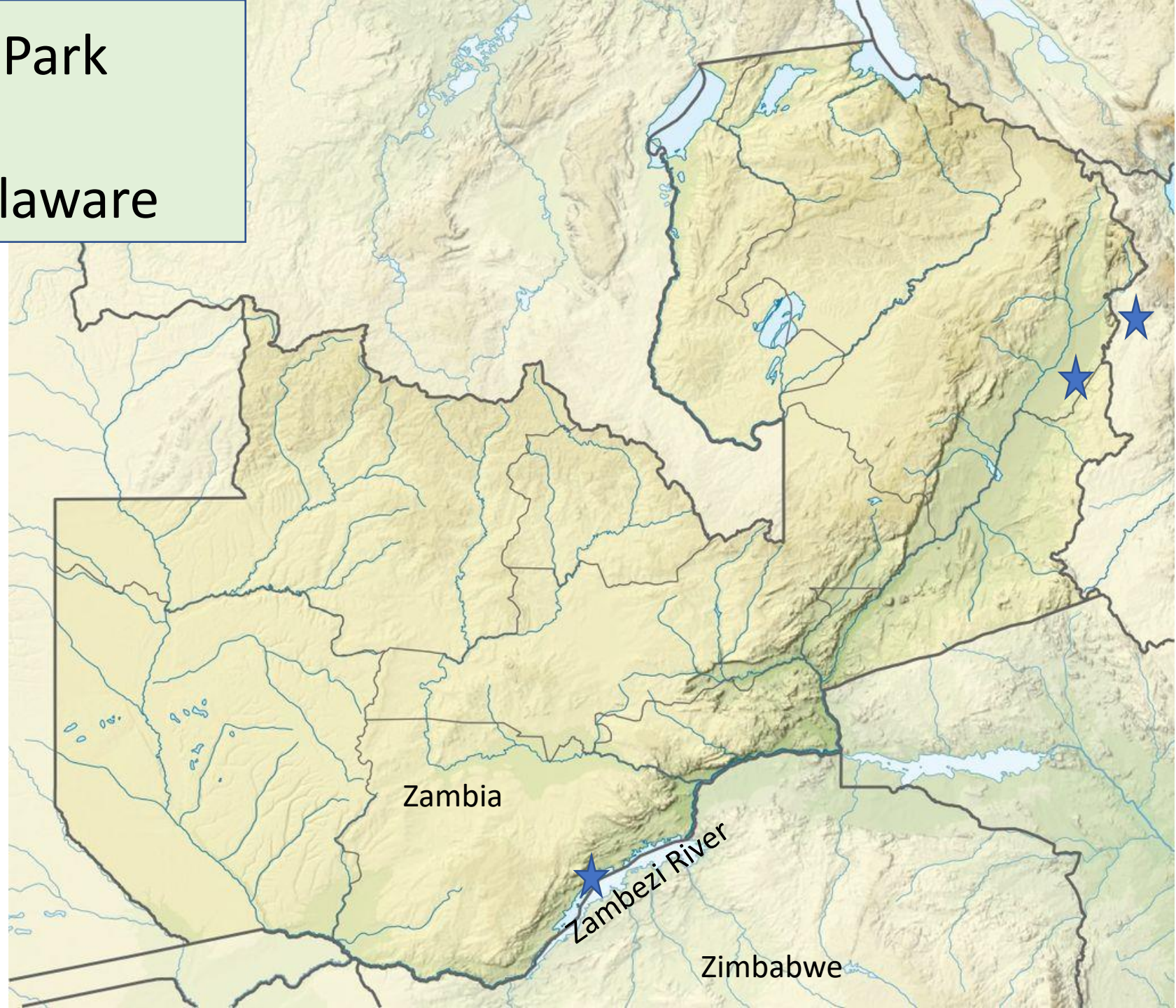








South Luangwa National Park
3,490 square miles
2,490 Square miles in Delaware





Saddlebill Stork
5' tall, 9' wingspan
15 pounds



African Fish Eagle
8 pounds, 8' wingspan, 30" body

Yellow Billed Stork









Red-billed Hornbill



Bee Eaters



African Lovebirds





Nile Cabbage & Hammerkops





10 Hippos



Humphry











Common Impala “Mobile Buffet”











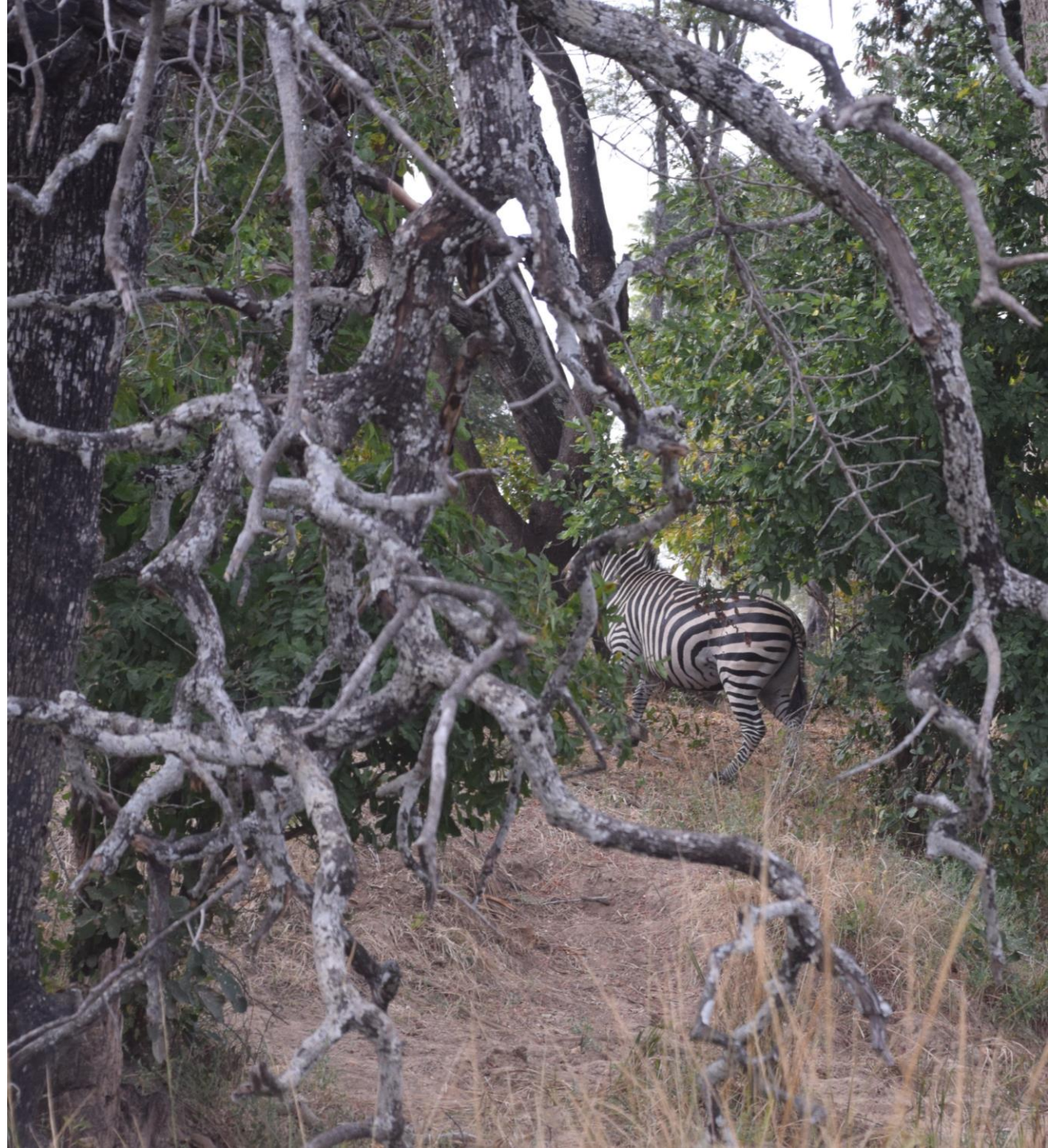






There are 5 Zebras in this photo











A photograph of a traditional stone building with a thatched roof, identified as the Luangwa Safari House. The building is constructed from rough-hewn stones and has a steep, dark thatched roof. A small, arched entrance is visible in the center. Two people are walking on a dirt path in front of the house. The surrounding area is lush with green grass and large trees, some of which have yellowing leaves, suggesting a savanna or woodland environment. The lighting is warm, indicating late afternoon or early morning.

Robin Pope Safaris

Luangwa Safari House
4 bedrooms
\$6000-\$8000 per night







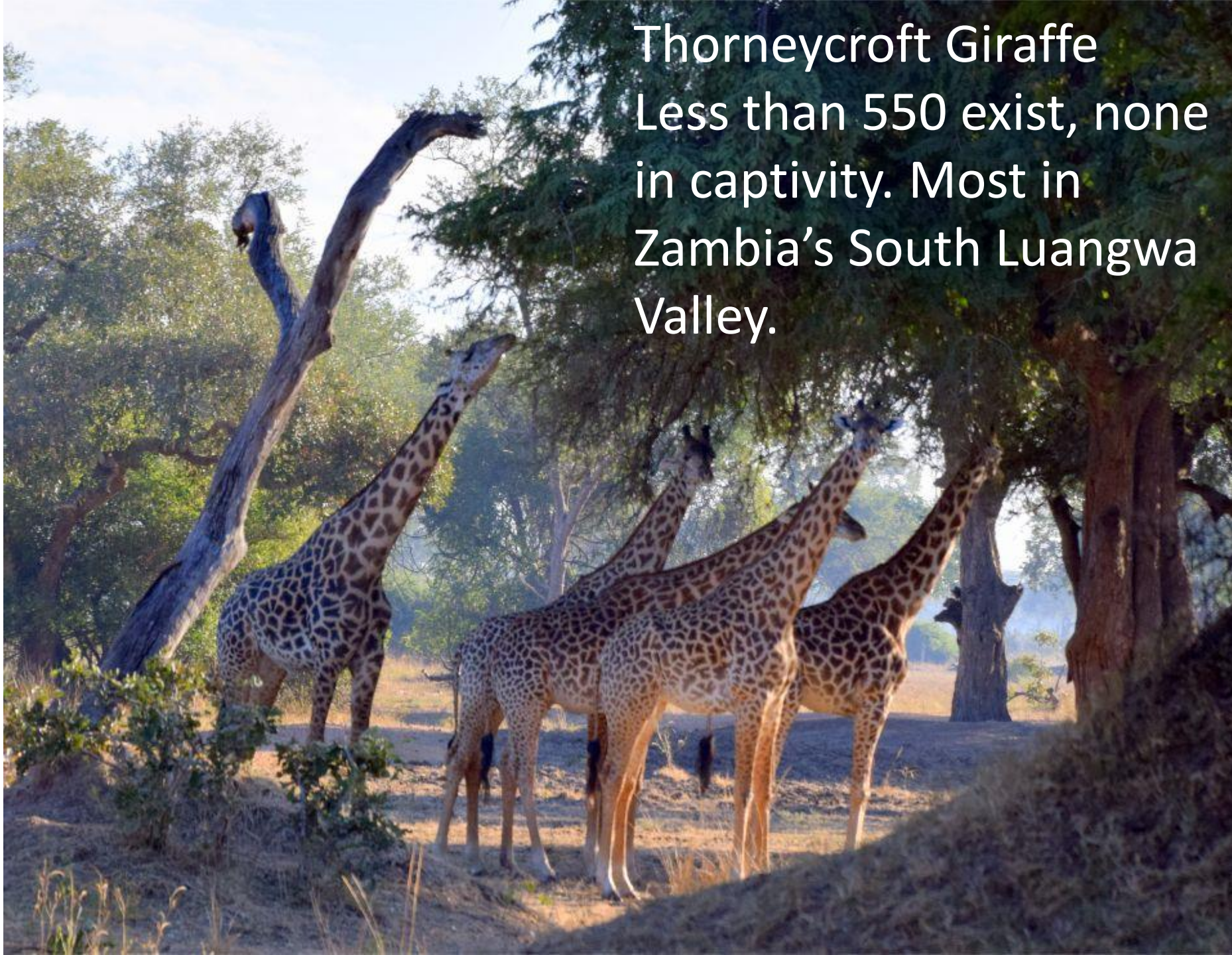




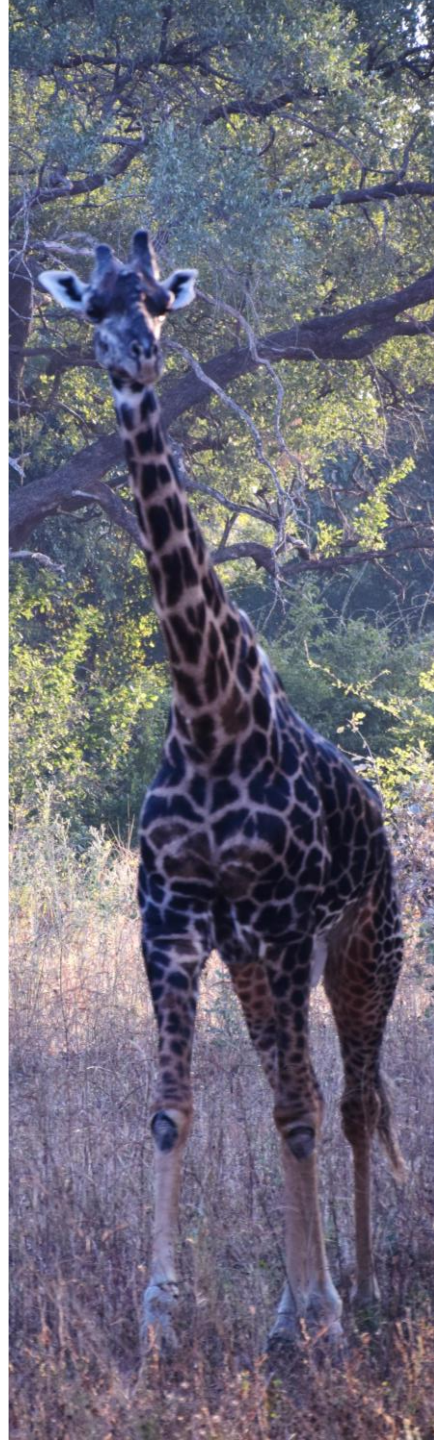




Thornecroft Giraffe
Less than 550 exist, none
in captivity. Most in
Zambia's South Luangwa
Valley.

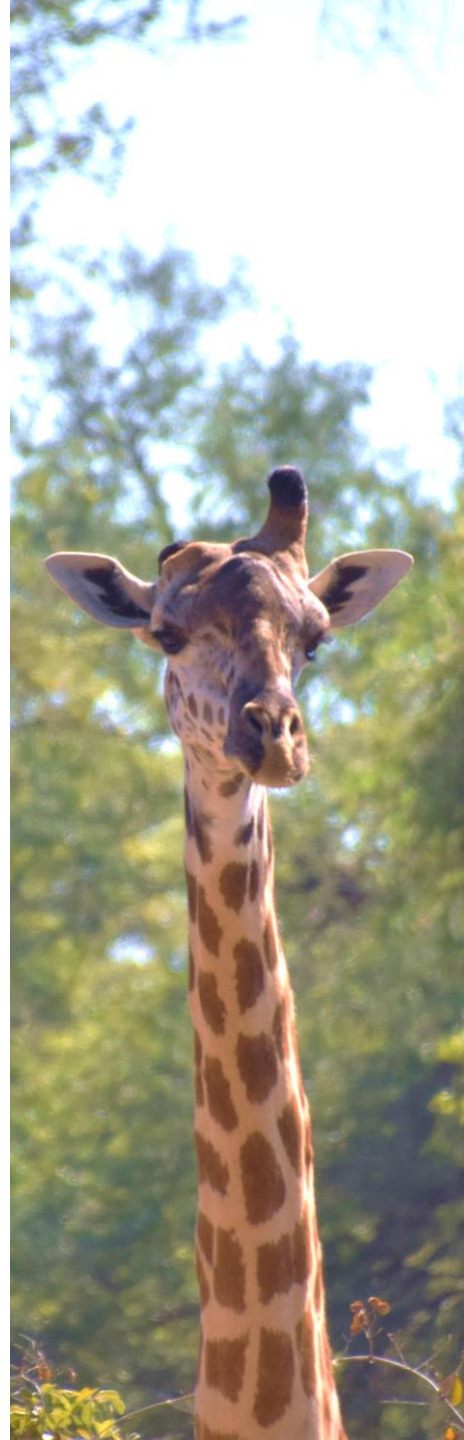
































Hyenas hunt in packs,
steal from Lions & Leopards
Bone crushing jaws, very territorial





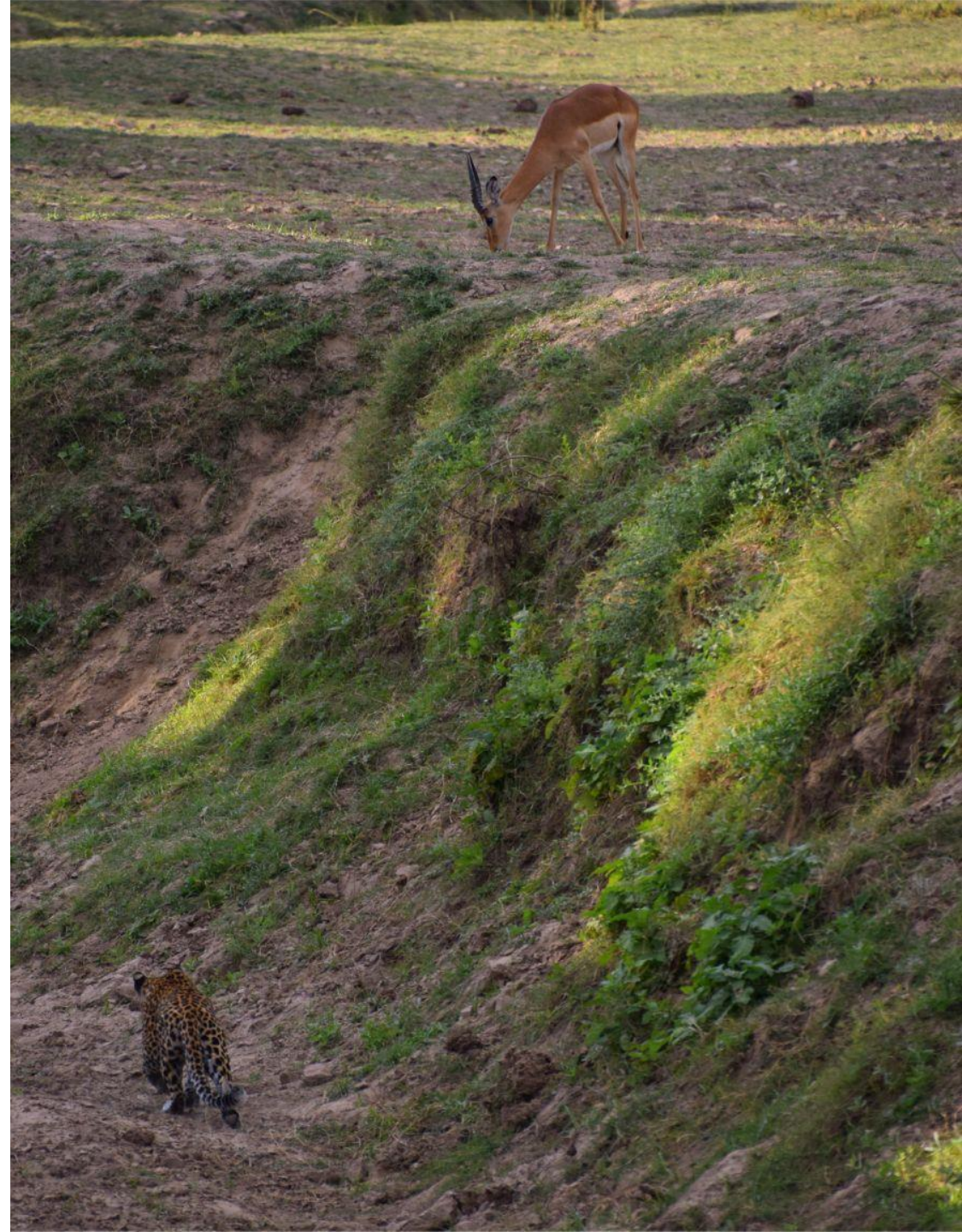














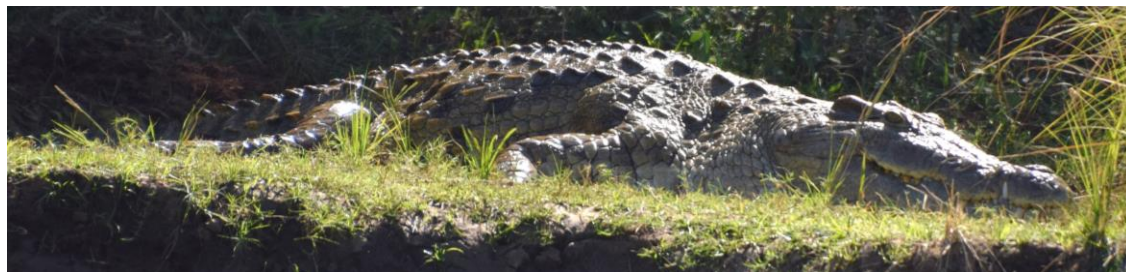




























Blue Helmet Guinea Fowl [UN]



Hammerkop





Vervet Monkeys



Baboon







Mike Shooting Elephants













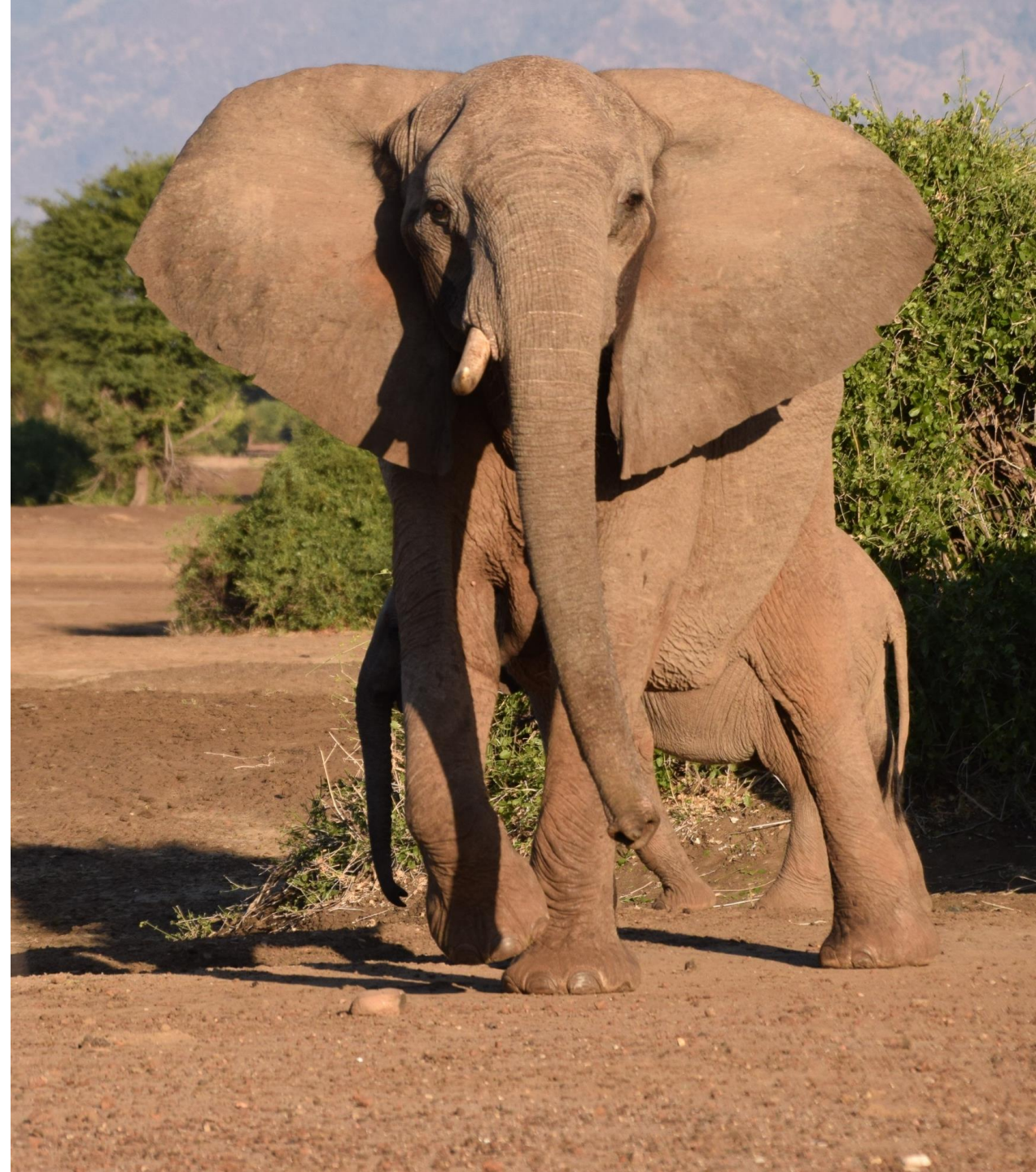






How many elephants do you see?















50 yards- [10 seconds]







Cape Genet





1580 sq mi. [Kent + Sussex County = 1292 Sq. mi.]











Water Buck







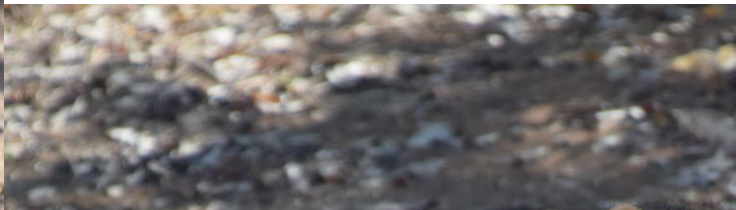
Fresh Lion Paw Print















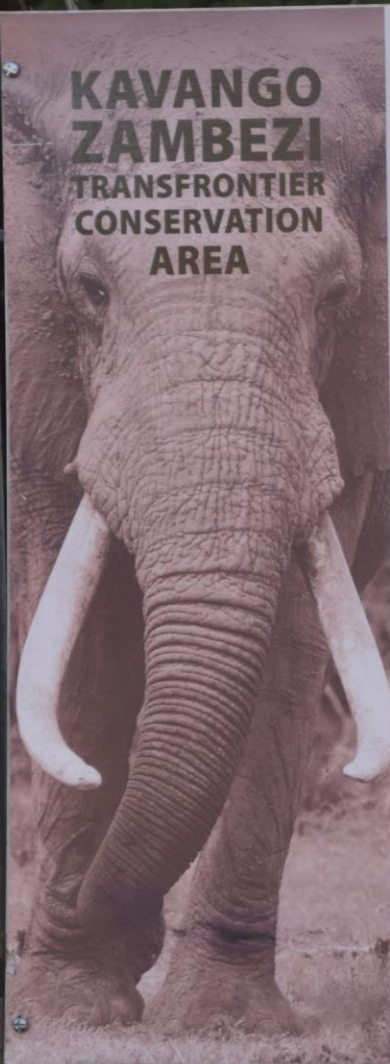








**KAVANGO
ZAMBEZI
TRANSFRONTIER
CONSERVATION
AREA**



Welcome to

**Victoria Falls
National Park**

















Greater Kudu







Puku



Common Warthog

















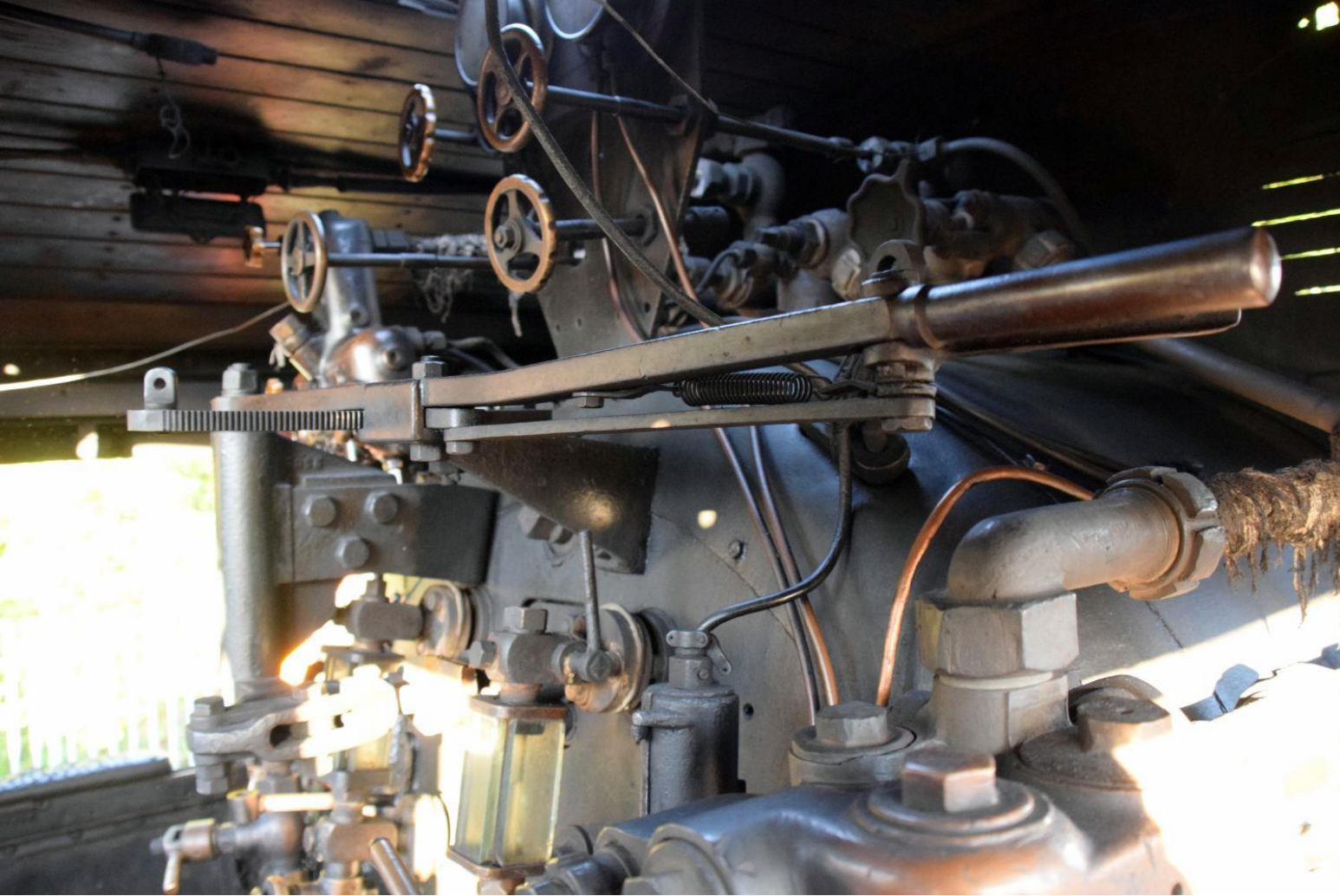






4-8-2 coal fired steam locomotive
Built in 1924 by the North British
Locomotive Co. in Scotland







Victoria Falls
5,500' wide
355' drop
Twice Niagara
World's largest

Rail Bridge 1905

Border Crossing













A night photograph taken from the perspective of someone inside a vehicle, looking out through the windshield. The left side of the frame is dominated by the dark, greenish-grey interior of the car, including the dashboard and part of the steering wheel. In the center of the road ahead, a white rectangular sign with the words "VICTORIA FALLS" in black capital letters is visible. The road is dark and appears to be a dirt or gravel path, with some dry grass and weeds on the sides. The background is very dark, with some faint lights visible in the distance, suggesting a rural or undeveloped area at night.

VICTORIA FALLS



















The End

